

Spectator Viewing and Player Areas for Games (per venue)

Top Level examples of player seating is listed below in Figures 1-6. The league reserves the right to modify the locations for players and spectators as the league progresses and Oregon Health Authority (OHA) guidelines change for [Outdoor Recreation and Outdoor Fitness Establishments](#)

Figure 1: **Waluga Park – East**

- Attendance restrictions: Two family members per player
- Arrival/Departures: Spectators need to stay in their cars until other teams leave the field
- Seating:
 - Bleachers reserved for players, coaches and scorekeepers

Color highlights indicate areas in field maps below:

- 1) **Red** highlight: player bag storage and modified dugout space
- 2) **Yellow** highlight: player warm up areas
- 3) **Blue** highlights: recommended spectator areas
 - Must provide own seating (bleachers unavailable)
 - 6ft foot spacing is required between spectators from different households and masks required (children under 2 are exempt per OHA regulations)



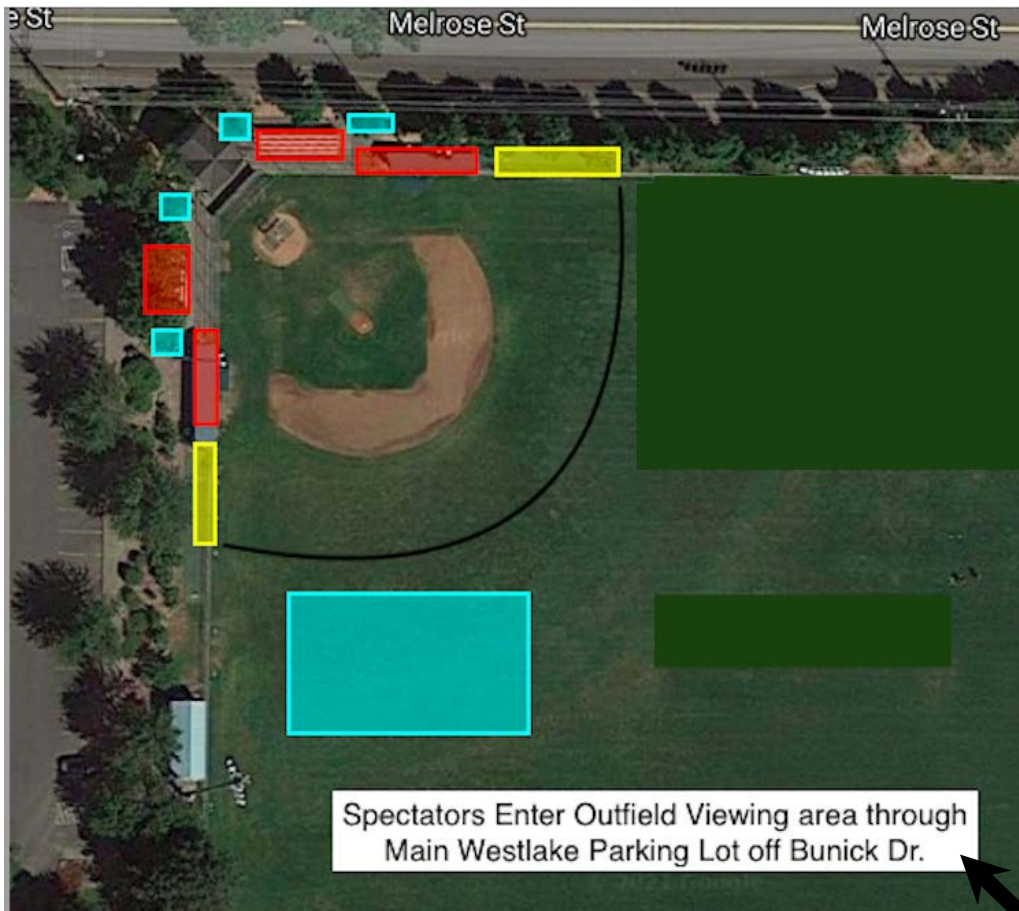
Spectator Viewing and Player Areas for Games (per venue) Continued

Figure 2: **Westlake #2 (grass field)**

- Attendance restrictions: Two family members per player
- Arrival/Departures: Spectators need to stay in their cars until other teams leave the field
- Seating:
 - Bleachers reserved for players and coaches

Color highlights indicate areas in field maps below: →

1. **Red** highlight: player bag storage and modified dugout space
2. **Yellow** highlight: player warm up areas
3. **Blue** highlights: recommended spectator areas
 - Spectators must provide own seating (bleachers unavailable)
 - 6ft foot spacing is required between spectators from different households and masks required (children under 2 are exempt per OHA regulations)
 - Outfield Seating
 - Spectators in outfield viewing must enter through the Main Westlake Parking Lot Entrance



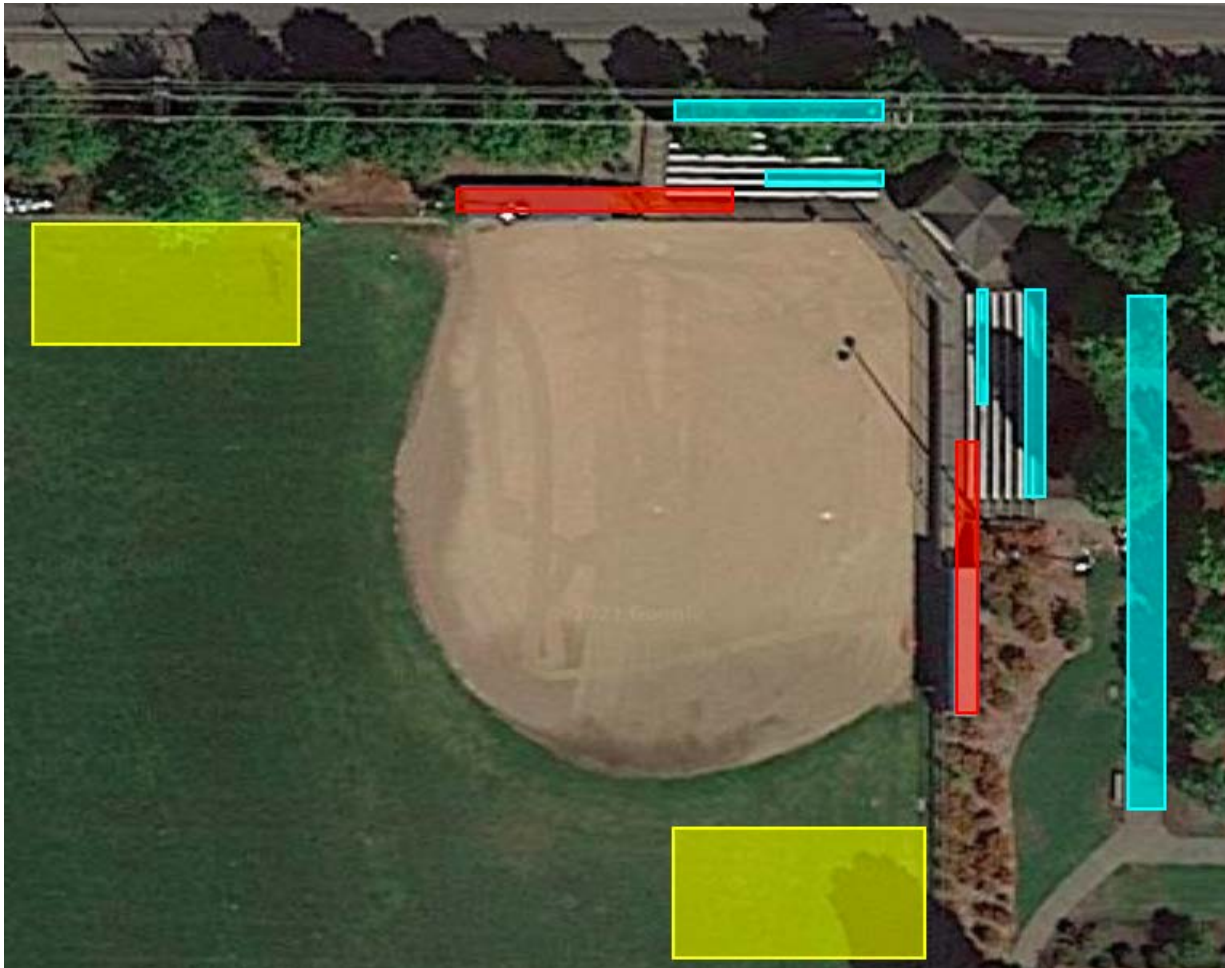
Spectator Viewing and Player Areas for Games (per venue) Continued

Figure 3: **Westlake #3 (all dirt field)**

- Attendance restrictions: Two family members per player
- Arrival/Departures: Spectators need to stay in their cars until other teams leave the field
- Seating:
 - Part of bleachers reserved for players, coaches and scorekeepers

Color highlights indicate areas in field maps below:

- 1) **Red** highlight: player bag storage and modified dugout space
- 2) **Yellow** highlight: player warm up areas
- 3) **Blue** highlights: recommended spectator areas
 - Limited bleacher seats are available
 - Spectators must provide own seating for outfield viewing areas
 - 6ft foot spacing is required between spectators from different household and masks required (children under 2 are exempt per OHA regulations)



Spectator Viewing and Player Areas for Games (per venue) Continued

Figure 4: **George Rogers Park**

- Attendance restrictions: Two family members per player
- Arrival/Departures: Spectators need to stay in their cars until other teams leave the field
- Seating:
 - Part of bleachers reserved for players, coaches and scorekeepers

Color highlights indicate areas in field maps below:

- 1) **Red** highlight: player bag storage and modified dugout space
- 2) **Blue** highlights: recommended spectator areas
 - Limited bleacher seats are available (top roll ONLY)
 - Spectators must provide own seating for non-bleacher seating
 - 6ft foot spacing is required between spectators from different households and masks required (children under 2 are exempt per OHA regulations)



Spectator Viewing and Player Areas for Games (per venue) Continued

Figure 5: Forest Hills Elementary Tee Ball Field

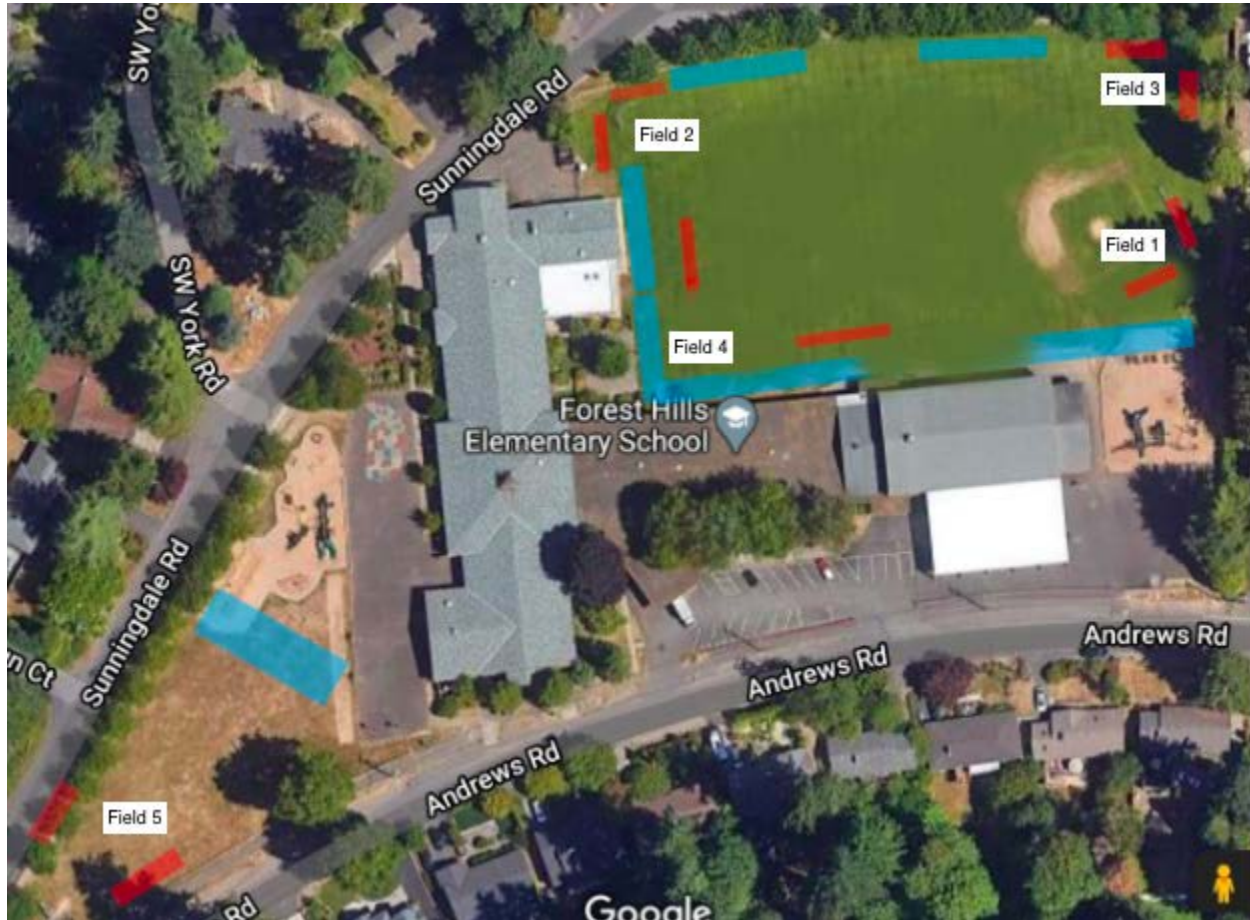
- Attendance restrictions: Two family members per player
- Arrival/Departures: Players, Coaches and Family member(s) must NOT arrive more than 15 minutes prior to start time
- Tee Ball Squad Games will be:
 - Field 1 & 3 used for Tee Ball Split Squad Games
 - Field 2 & 4 used for Tee Ball Split Squad Games
 - Field 5 used for Tee Ball Games

Color highlights indicate areas in field maps below:

Red highlight: player bag storage and modified dugout area

Blue highlights: recommended spectator areas

- Spectators must provide own seating
- 6ft foot spacing is required between spectators from different households and masks required (children under 2 are exempt per OHA regulations)



Spectator Viewing and Player Areas for Games (per venue) Continued

Figure 6: Forest Hills Elementary International League (IL) Field - IL Games (Mondays & Wednesdays)

- Attendance restrictions: Two family members per player
- Arrival/Departures: Players, Coaches and Family member(s) must NOT arrive more than 15 minutes prior to start time

Color highlights indicate areas in field maps below:

- 1) **Red** highlight: player bag storage and modified dugout area
- 2) **Blue** highlights: recommended spectator areas
 - Spectators must provide own seating
 - 6ft foot spacing is required between spectators from different households and masks required (children under 2 are exempt per OHA regulations)



Spectator Viewing and Player Areas Regulations and Updates:

Spectator Viewing and Player Areas for Games (per venue) Continued

1. The Lake Oswego Little League Board of Directors has been monitoring the COVID-19 situation closely. The health and safety of our children is our first priority. The board is aligned with the direction set by the Oregon Health Authority (OHA), the Centers for Disease Control (CDC), the City of Lake Oswego, and Little League International.
2. Our mission is to provide a framework for our league to follow as we return-to-play during the COVID-19 pandemic.
3. A spectator with any of the following conditions should not attend a practice or game until evaluated by a medical provider and given clearance to do so:
 - Active COVID-19 infection
 - Known direct contact with an individual testing positive for COVID-19
 - Fever
 - Cough
4. The participation limits will be adjusted to match the restrictions for Clackamas County's risk category as defined by OHA. The count includes players, coaches, parents, and any random people at the park.
 - Extreme Risk = 50 people
 - High Risk = 75 people
 - Moderate Risk = 150 people
 - Low Risk = 300 people
5. The Lake Oswego little league reserves the rights to update the safety protocols as anytime during the season to best adjust to situations, lessons learned, and state/local guidance. In the event of changes that are needed to be made, the league will rapidly communicate with all parents and coaches to disseminate any new guidelines. Updated information will be provided to every participant's parents/guardians via email and communicated through coaches to players.