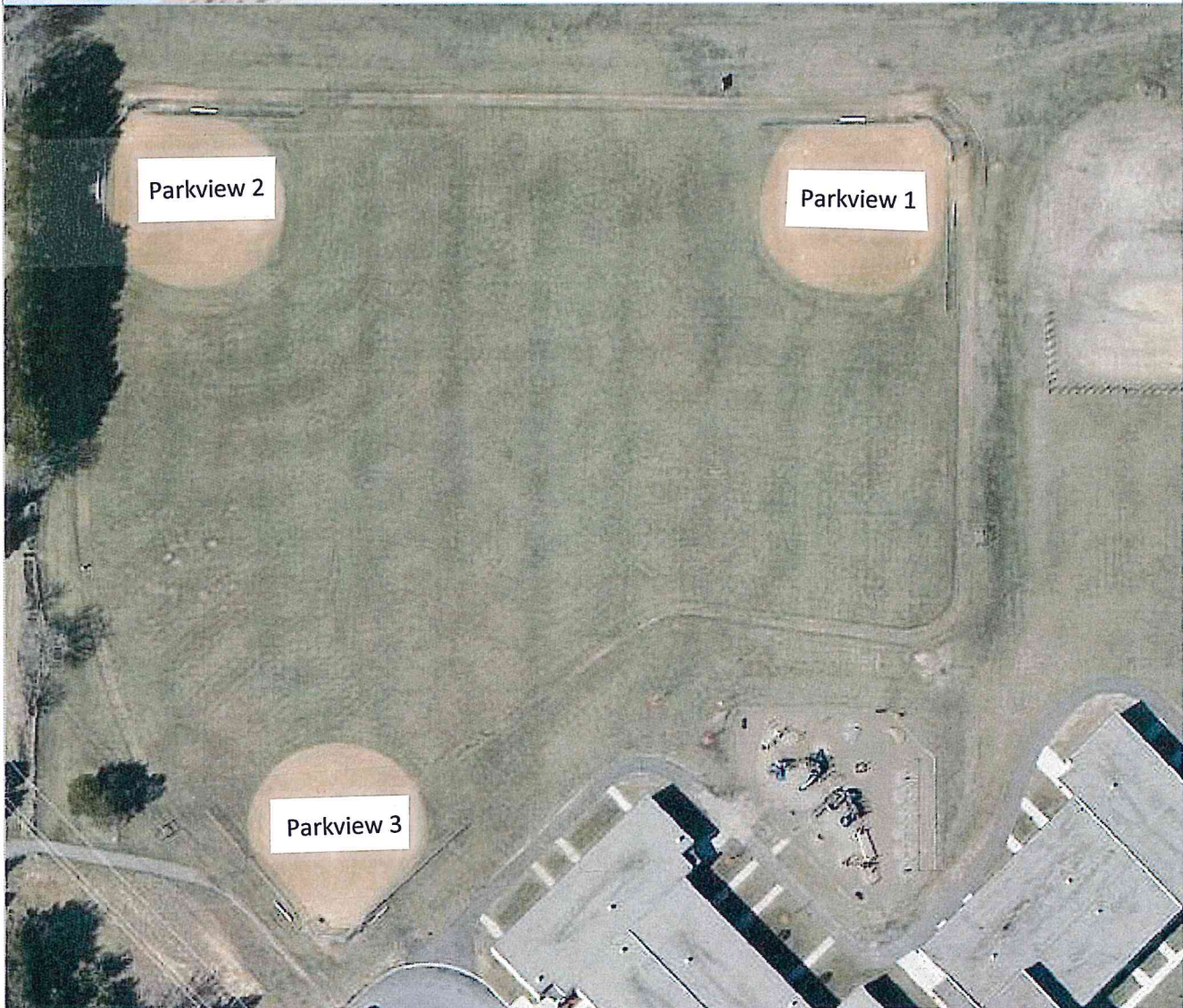




Interactive
Maps

Property Map



NOTES:

-Enter Notes Here-

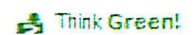
Map Scale: 1" ≈ 100 ft.

Print Date: 4/18/2012



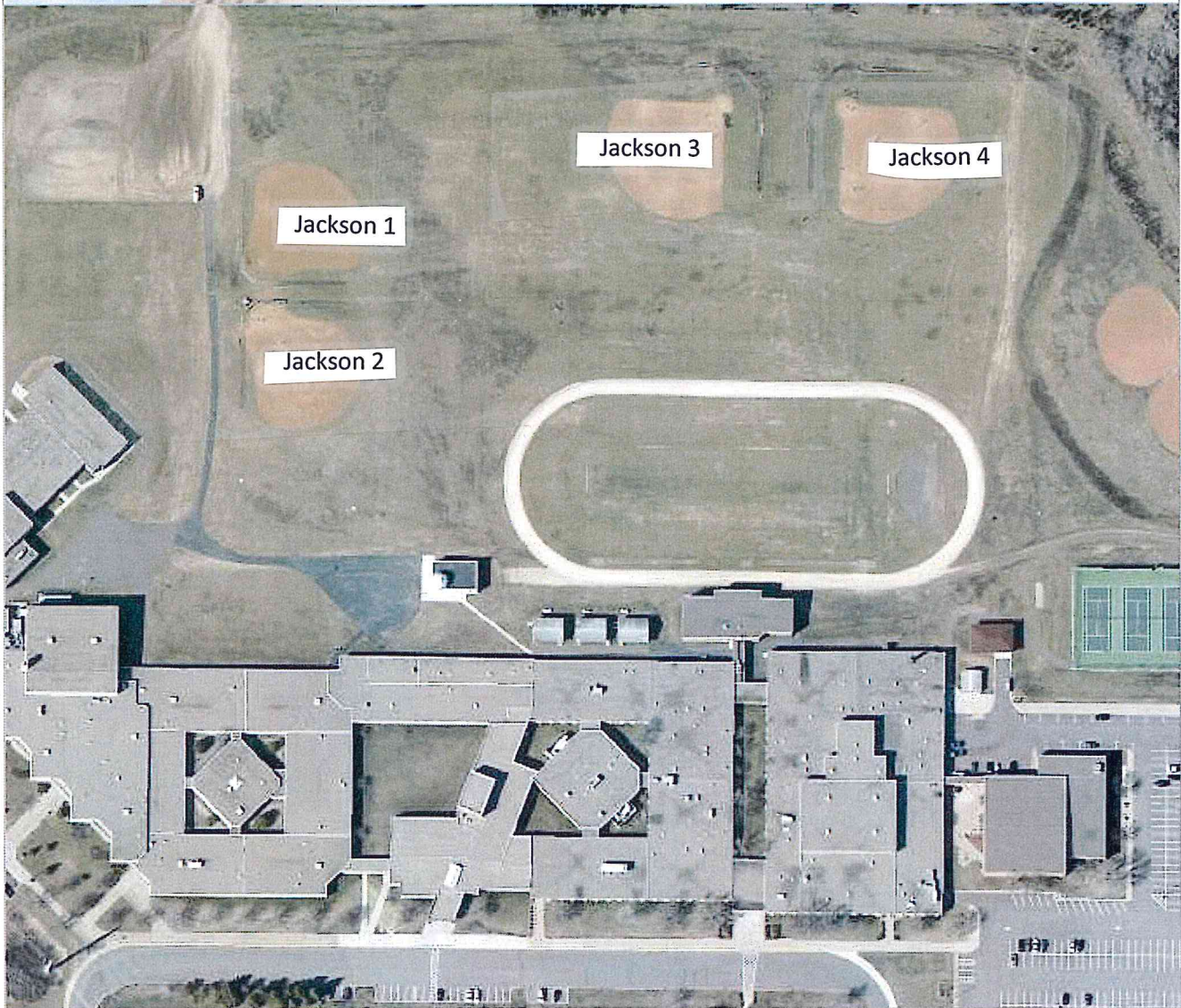
This map is a compilation of data from various sources and is furnished "AS IS" with no representation or warranty expressed or implied, including fitness of any particular purpose, merchantability, or the accuracy and completeness of the information shown.

COPYRIGHT © HENNEPIN COUNTY 2012





Property Map



NOTES:

-Enter Notes Here-

Map Scale: 1" ≈ 200 ft.

Print Date: 4/18/2012



This map is a compilation of data from various sources and is furnished "AS IS" with no representation or warranty expressed or implied, including fitness of any particular purpose, merchantability, or the accuracy and completeness of the information shown.

COPYRIGHT © HENNEPIN COUNTY 2012

