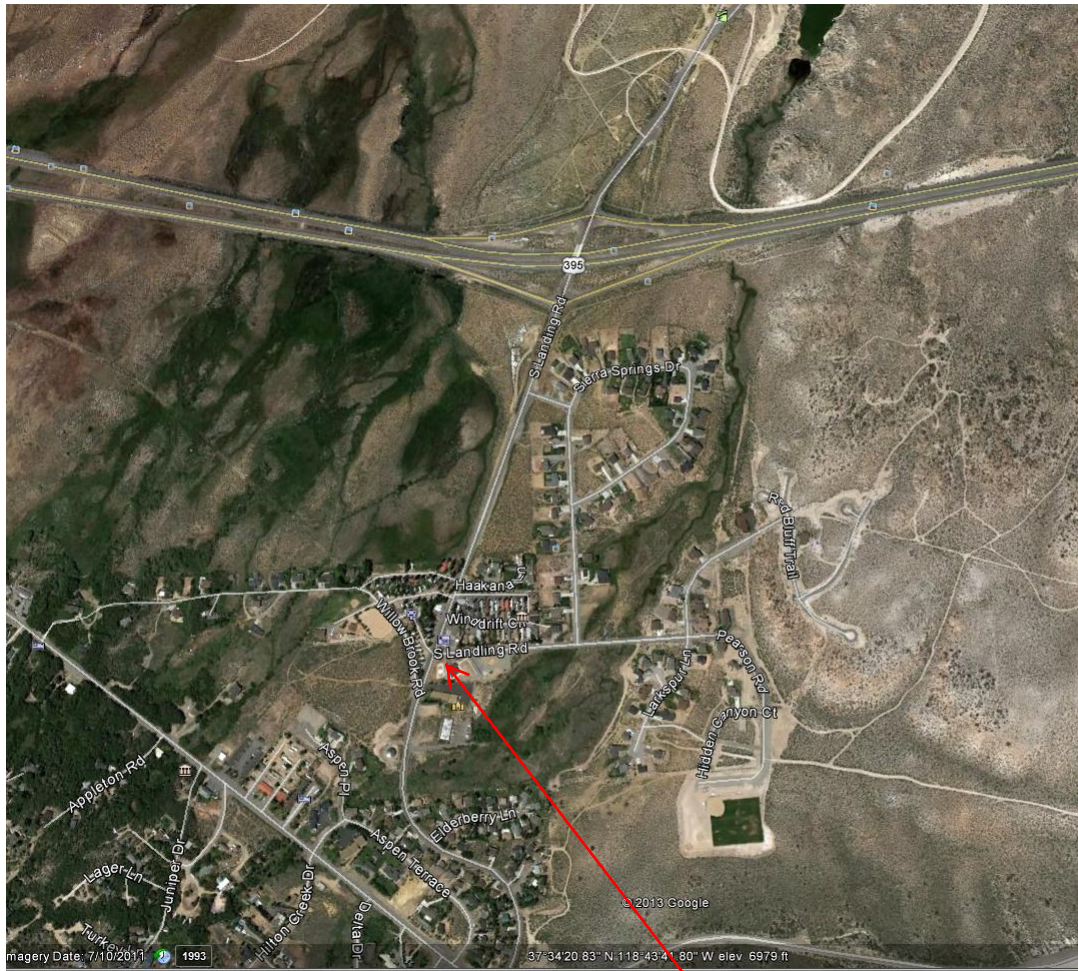


## Mammoth AYSO U12 field in Crowley Lake



Approximately 12 miles south of the junction of SR203 (turn off to Mammoth Lakes) and US 395

Continue south on 395 for about 12 miles and exit at the Community of Crowley Lake / Hilton Creek.

Turn right and continue to the small store and Crowley Community Center, turn left here on Pearson Road.

Follow Pearson Road – it dead ends at the soccer/ball field

The Crowley Lake field is 150' wide and 270' long.

Turn left here at  
Pearson Road -  
field is at end of  
road