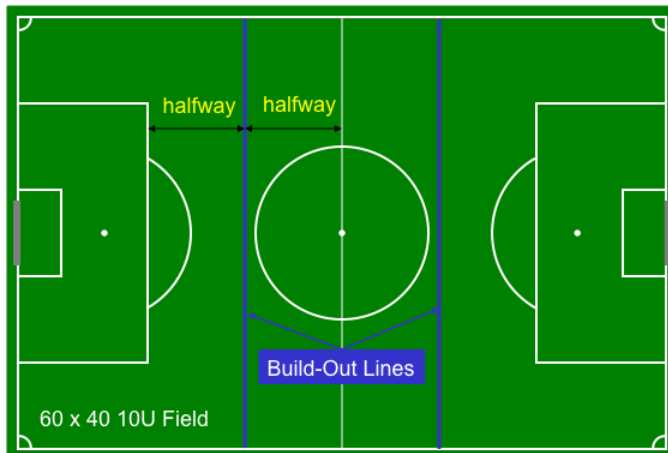




Player Development Initiatives in Sections 2 & 9

BUILD-OUT LINES IN 9U–10U



- The build-out line (BOL) promotes playing the ball out of the back in a less pressured setting.
- The build-out lines are located halfway between the halfway line and the top of the penalty area.
- The build-out lines may be solid, dashed, or simply marked by cones (or flags) off the field
- The build-out line only impacts three situations:
 1. Goalkeeper controls the ball with the hands
 2. Goal kicks
 3. Offside

Goalkeeper controls the ball with the hands:

- Opponents must retreat behind the build-out line.
- The goalkeeper may not punt or drop-kick the ball: indirect free kick from location of the violation—*note*: goal area exception
- The goalkeeper may pass, throw, or roll the ball to any point on the field.
- Quick restart: The goalkeeper may release the ball before the opponents have completely retreated behind the build-out line. In doing so, the goalkeeper accepts the position of the opponents who may intercept the ball.
- Once the ball is released by the goalkeeper the opposing players may cross the build-out line.
- The 6-second limitation on goalkeeper possession should not start until all opponents have moved behind the build-out line. Referees should be flexible with this.

Goal kick:

- Opponents must retreat behind the build-out line.
- The ball may be kicked to any point on the field.
- Once the ball is in play (leaves the penalty area), the opposing players may cross the build-out line.
- Quick restart: The goal kick may be taken before the opponents have completely retreated behind the build-out line. In doing so, the team accepts the position of the opponents and they may intercept the pass. (*Note*: Law 16 restrictions on opposing players and the penalty area still apply)

Violations of the build-out line: when opponent crosses early and interferes with play:

- Use judgment and don't interfere for trifling violations.
- Be vocally proactive. Referee may hold up play until opponents retreat.
- Focus should be on education, not strict enforcement.
- Build-out line violation on goalkeeper possession: indirect free kick on BOL where violation occurred.
- Build-out line violation on a goal kick: retake the goal kick.
- Repeated violations of the build-out line should not be viewed as misconduct
- Region staff should address coaches who encourage/teach their players to disregard the build-out line

Offside:

- The build-out line in the opponents' half of the field replaces the halfway line in determining offside position.